

Welcome to QA	4
Pre-Sessional English	6
International Foundation Programmes	8
International Year One	12
Pre-Master's	16



E C A ? E

Nort



Want to build your English language skills to successfully study at a UK university?

Whether you intend to study at foundation, undergraduate or postgraduate level in the UK, our online Pre-Sessional English course combines academic and social language skills to help you get there.

**The Pre-Sessional English programme is ideal if you want to:**

- Meet the English language requirements needed for a QA partner university programme
- Develop your vocabulary, academic writing, reading, listening or speaking skills
- Develop your confidence in an English-speaking academic environment



Develop your academic study skills and English language ready to progress on to an undergraduate degree with a UK university.

**International Foundation Programmes are ideal if you:**

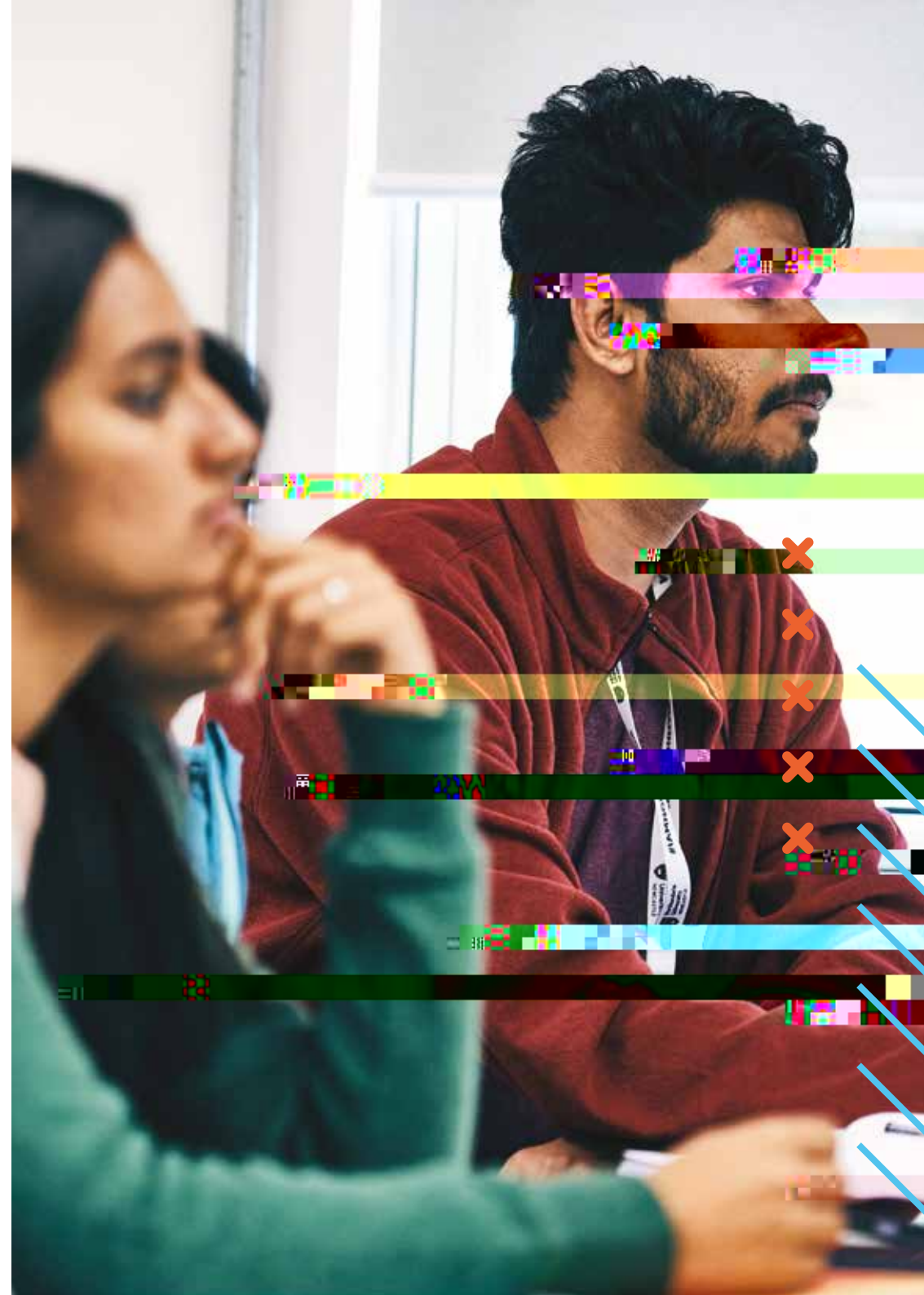
-



## CA A D G E

### Subjects you can progress onto:

	Northumbria University	Solent University	University of South Wales
Accounting and Finance	✓	✓	✓
Applied Sciences	✓	✓	✓
Architecture/Architectural Design	✓	✓	✓
Arts (Performance and Visual)	✓	✓	✓
Built Environment	✓	✓	✓
Business	✓	✓	✓
Communication and Media	✓	✓	✓
Computer Science, IT and Digital Technologies	✓	✓	✓
Design	✓	✓	✓
Education			✓
Engineering	✓	✓	✓
English	✓		
Fashion	✓	✓	✓
Geography and Environment	✓		
Journalism	✓		✓
Law	✓		✓
Medical	✓		
Psychology	✓	✓	✓
Social Sciences	✓	✓	✓
Sport	✓	✓	✓





## EA EA E

Equivalent to the first year of an undergraduate degree, these programmes fully prepare you for joining the second year of your chosen degree.

### International Year One is ideal if you:

- Have good High School grades, or equivalent
- Have IELTS 5.5 overall (with a minimum of 5.5 in each individual component) from a UKVI Approved Centre
- Want to study an undergraduate degree at a UK university

## E E

Choose your:

- Undergraduate subject and course
- University

Follow the application process to submit your application.

Study your International Year One.

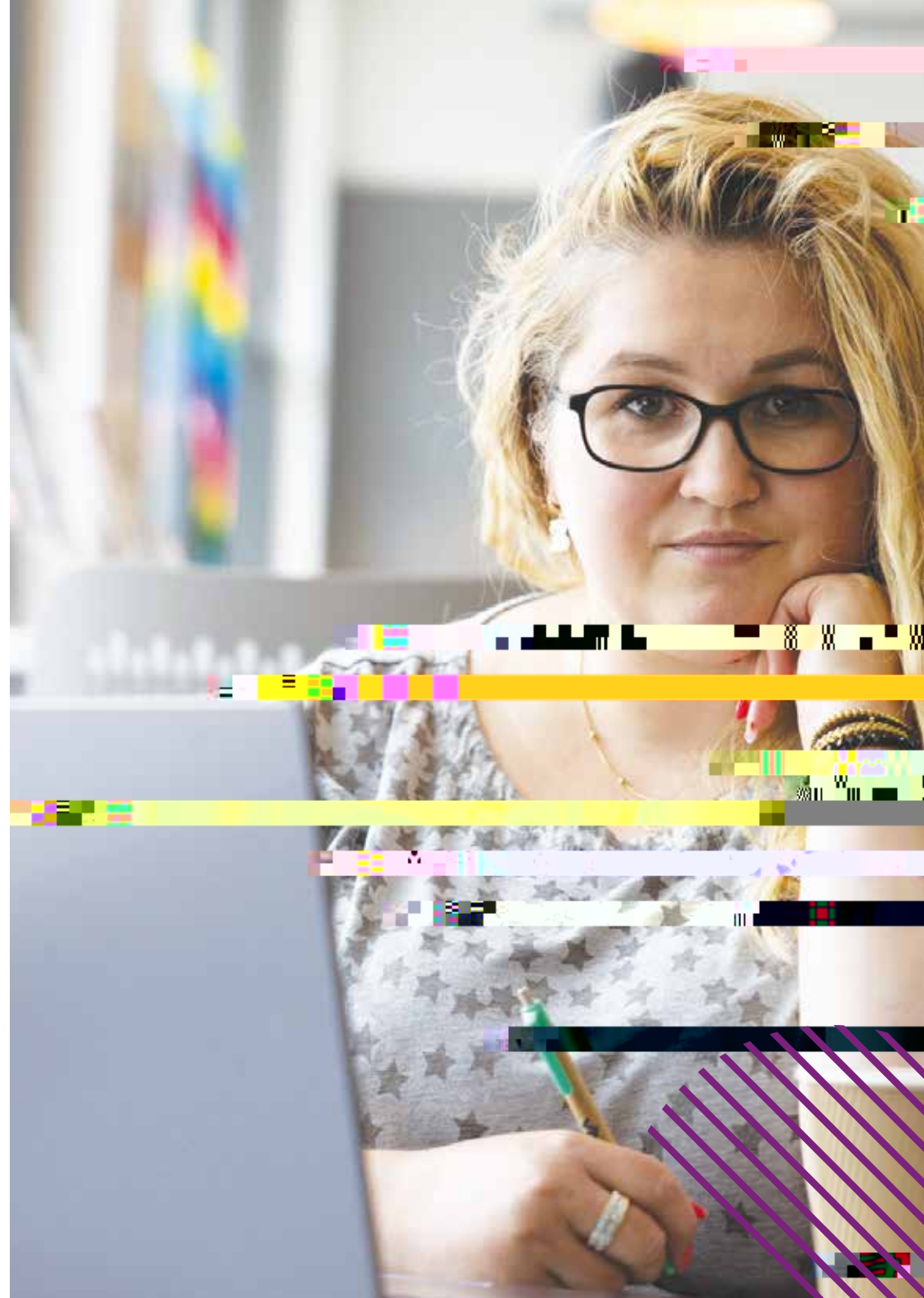
- Study subject-specific content to build your knowledge and understanding
- C4anç)25 0 Td(C4anç)25 i6i3tualTex.niv)1 (on

## CA A D G E

### Subjects you can progress onto:

	Northumbria University Newcastle	Northumbria University London	University of South Wales
Accounting		✓	
Business Management	✓*	✓	✓
Entrepreneurship	✓		
Finance		✓	
Human Resource Management	✓	✓	✓
International Business		✓	
Logistics, Procurement and Supply Chain Management		✓	✓
Marketing		✓	✓
Tourism and Events Management	✓	✓	

\*Includes an option of a placement year with Northumbria University Newcastle.





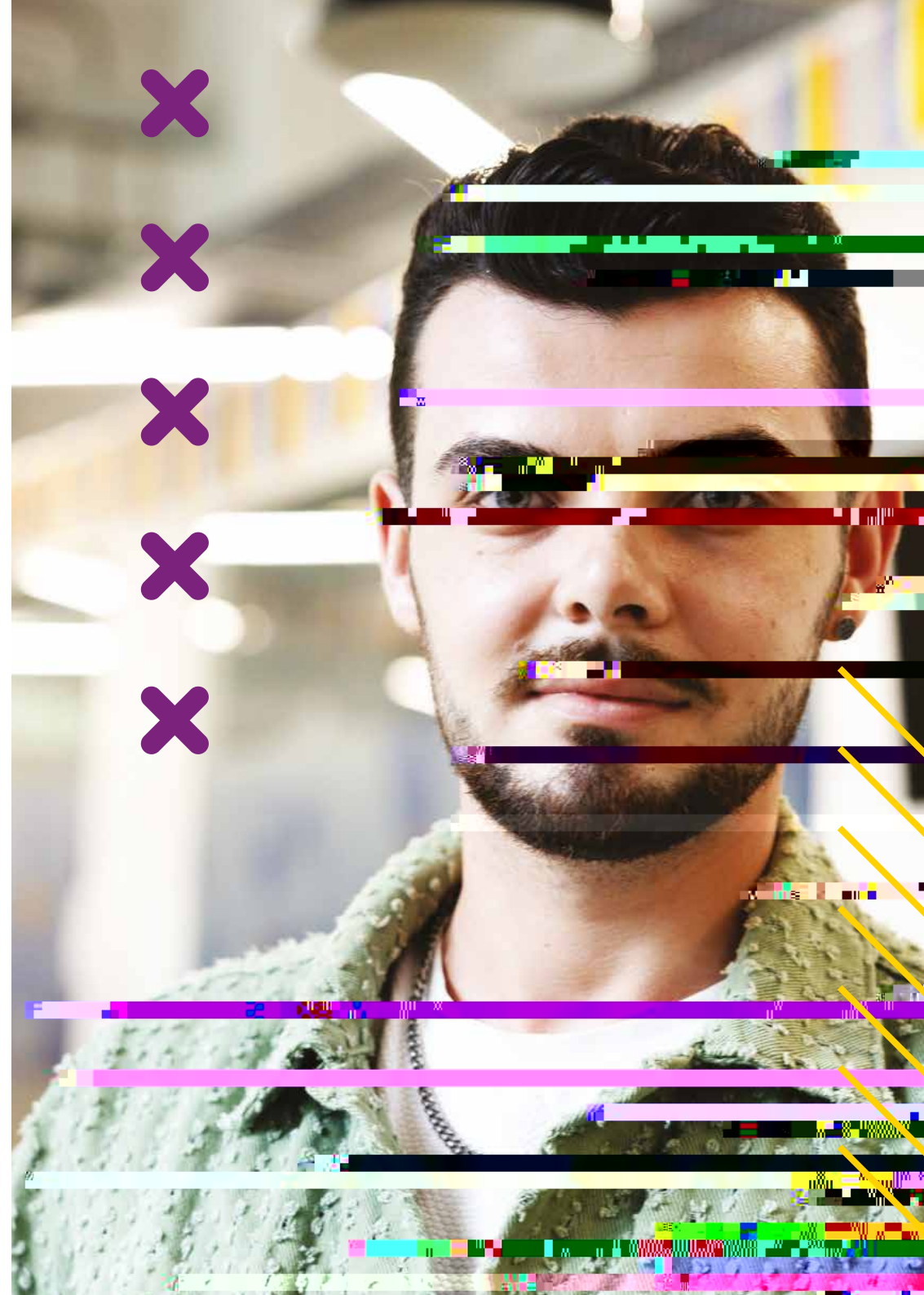


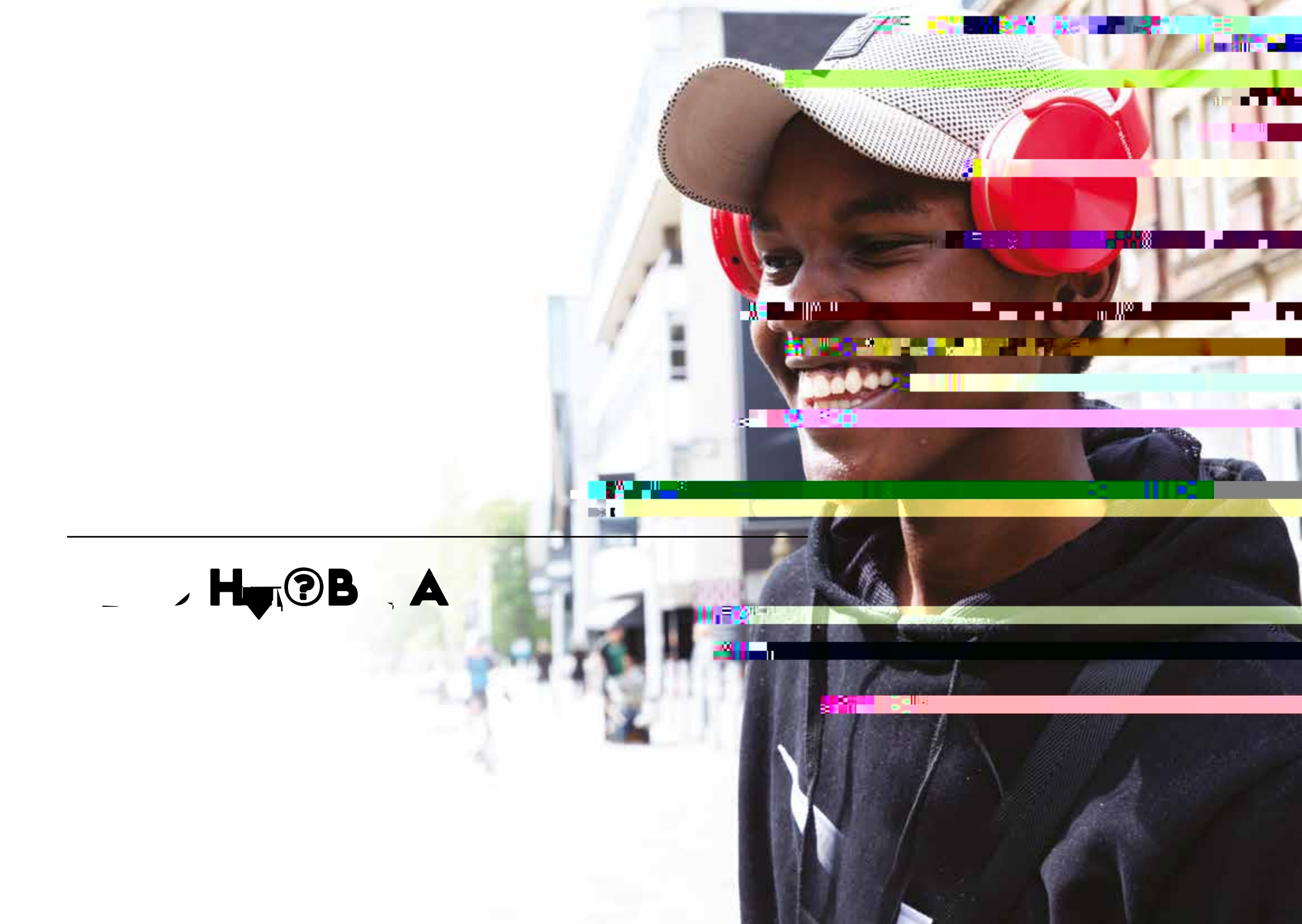
A Pre-Master's programme is the perfect preparation for studying one of

## C A D G E

### Subjects you can progress onto:

	Northumbria University Newcastle	Northumbria University London
Business	✓	✓
Computing	✓	✓
Construction Management	✓	
Cyber Security	✓	✓
Data Science	✓	✓
Engineering	✓	
Finance Management	✓	✓
Global Logistics, Operations and Supply Chain Management	✓	✓
Human Resource Management	✓	✓
Marketing	✓	✓
Project Management	✓	✓
Psychology	✓	





---

H<sup>?</sup>B A

Northumbria is a research-rich, business-focused, professional university with a global reputation for academic excellence. We have pathway options at two of our campuses, Newcastle and London. Our main campus is based in the heart of Newcastle upon Tyne, which is regularly voted the best place in the UK for students. Northumbria University's London Campus is located within a student hub in the heart of the City of London, ideally situated just minutes away from Liverpool Street station.

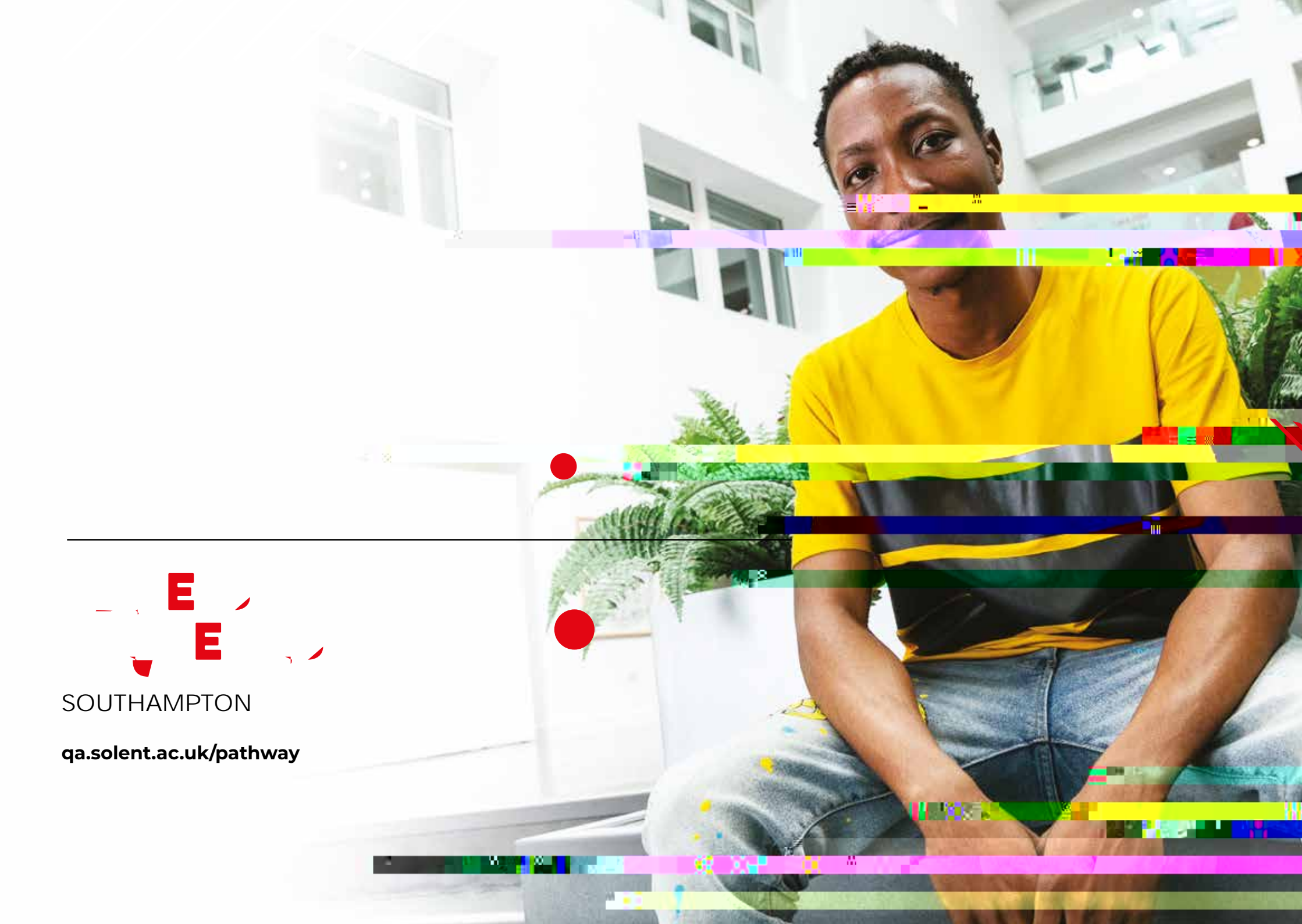
The university has its origins in the Rutherford College, founded in 1880. Today, by putting students at the heart of an outstanding experience, and with world-leading research and award-winning partnerships, Northumbria is a new kind of excellent university.

Northumbria is ranked Top 30 in the UK for graduates in highly skilled employment (Graduate Outcomes Survey 2020/21 Leavers).

#### **TOP 25 FOR RESEARCH POWER IN THE UK**

(Research Excellence Framework 2021). The national system for assessing the quality of research in all UK universities.





E  
E

SOUTHAMPTON

[qa.solent.ac.uk/pathway](http://qa.solent.ac.uk/pathway)





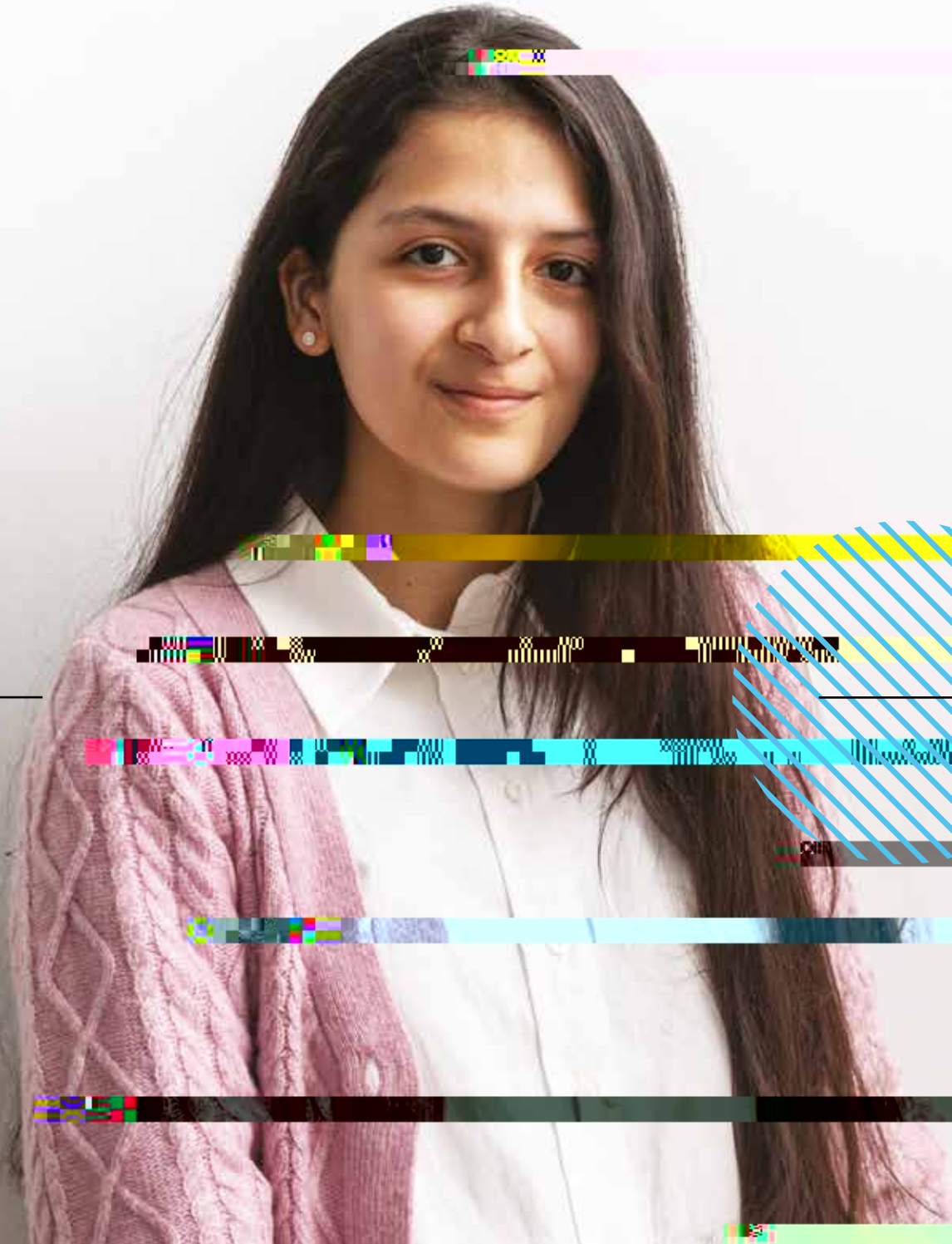
The International Foundation Programme helped me not only academically but I also had a great opportunity to explore Wales. The programme is well balanced so felt comfortable to do other activities alongside my coursework. I went to explore Wales, started a part-time job, and engaged in a number of activities. I had enough time and space to adapt to the new situation. I got organisation and time-management skills thanks to the programme.\*

**Rania Ikram Iguer - International Foundation Programme**

F E H A E

GREATER CARDIFF

\*Quote not relative to imagery



The University of South Wales focuses on creating a positive and collaborative culture for you to join and tackle real-world problems and challenges. Their practical and applied approach to study means you'll make a difference in practice, not just on paper.

With state-of-the-art facilities, each of their campuses provides you with invaluable hands-on learning. Additionally, their links to industry employers and work experience opportunities ensure that by the time you leave university, you'll be ready for what the future holds.

Employability is at the heart of everything USW does. They seek to ensure that you'll be prepared to start a successful career after graduating from university. They have made employability part of the curriculum, with teaching informed by what happens in the real world and what skills you'll need for the workplace. All of our Pathway courses are delivered at our Pontypridd Campus.



**ART AND DESIGN AT USW IS  
RATED TOP FIVE IN THE UK**

for Teaching Quality and Student Satisfaction (Complete University Guide 2023)

**87% OF GRADUATES IN EMPLOYMENT/  
FURTHER STUDY**

within 6 months of graduating (DHLE Report 2021)

**SHORTLISTED FOR UNIVERSITY  
OF THE YEAR**

(Times Higher Education Awards, 2023)

**COMPUTER SCIENCE IS RATED TOP 10  
IN THE UK FOR TEACHING QUALITY**

(Times Good University Guide 2024)



# F E E A , ED E

## What study option is right for me?

The **Pre-Sessional English** is designed to develop students English skills to meet the language requirements for a degree with one of our partner universities.

**The International Foundation Programme** is designed to support students with English language levels equivalent to IELTS 4.5 (with no single component below 4.0) or higher. For the minimum component scores, please refer to our website.

**The International Year One (IY1)** programmes are designed to support students who have IELTS 5.5 (or equivalent). The programme integrates English language development with content comparative to the first year of an undergraduate degree.

**Pre-Master's** are designed specifically to support international students who have IELTS from 5.5 (with no single component below 5.5). The programme prepares for studying at Master's level.

## What English language level do I need to study a Foundation Programme?

If you have IELTS 4.5 (or equivalent), from a UKVI Approved Centre, you will need to study one of the 3 or 4 term programmes to allow enough time for your language skills to develop to the standard needed to study a UK undergraduate degree.

If you have IELTS 5.0 (or equivalent), from a UKVI Approved Centre, you will be able to study one of the 2 or 3 term programmes.

## What start dates are available?

We offer multiple start dates throughout the year depending on the programme and your chosen university. Intakes usually occur in the following months:

**Pre-Sessional English programme:** September, October, February, March, June, July and August

**International Foundation Programme:** October, January, and March

**International Year One:** September, October and January

**Pre-Master's:** September, January and May

Please refer to our website for information by university partner as intakes do differ between universities to fit with academic calendars.

## What are my accommodation options?

Accommodation options vary depending on which university you choose to study with. All of the universities that we partner with for pathway programmes have student halls of residence available. There are also private halls and houses available.

For students under 18, it is our policy for these students to live in homestays unless we receive signed consent from a parent or guardian, notifying us of an alternative accommodation decision.

## Are there scholarships or bursaries available?

We offer a range of scholarships and bursaries based on academic merit and individual applications. You do not need to submit an additional application for these, they are awarded based on your course application. For more information, please contact us.





## H A

If a pathway programme is for you, we have tried to make the application process as straightforward as possible.

You can find all application forms at:  
**[qahighereducation.com/pathway](http://qahighereducation.com/pathway)**

To process your application quickly, submit the following:

- Application form - you can complete it online by clicking apply online on the course page for your chosen programme and preferred start date
- A copy of your passport
- A copy of your original qualifications and transcripts (and Certified Translation, where applicable)
- References (dependent on your programme choice)
- A personal statement
- Copies of any current and previous UK visas, CAS and copies of exit stamp (if you require a student visa to study in the UK)
- A valid IELTS from a UKVI Approved Centre
-

